

## Accessories

### TS 35X7.5/LL 1M/ST/ZN

**Weidmüller Interface GmbH & Co. KG**  
 Klingenbergstraße 26  
 D-32758 Detmold  
 Germany  
 Fon: +49 5231 14-0  
 Fax: +49 5231 14-292083  
 www.weidmueller.com

### Product image



Similar to illustration

### Building installation wiring

For building installations, we offer a complete system that revolves around the 10×3 copper rail and comprises perfectly coordinated components: from installation terminal blocks, neutral conductor terminal blocks and distribution terminal blocks to comprehensive accessories such as busbars and busbar holders.

### General ordering data

Type	TS 35X7.5/LL 1M/ST/ZN
Order No.	<a href="#">0514510000</a>
Version	Rail, TS 35, TS 35 x 7.5, with slot, Steel, galvanized, chromium-plated
GTIN (EAN)	4008190116620
Qty.	1 m

**Accessories**  
**TS 35X7.5/LL 1M/ST/ZN**

**Weidmüller Interface GmbH & Co. KG**  
 Klingenbergstraße 26  
 D-32758 Detmold  
 Germany  
 Fon: +49 5231 14-0  
 Fax: +49 5231 14-292083  
 www.weidmueller.com

**Technical data**
**Dimensions and weights**

Width	35 mm	Width (inches)	1.378 inch
Height	35 mm	Height (inches)	1.378 inch
Depth	7.5 mm	Depth (inches)	0.295 inch
Net weight	314 g		

**Material data**

Material	Steel	Surface finish	galvanized, chromium-plated
Colour	silver		

**System specifications**

Version	with slot	Rail	TS 35, TS 35 x 7.5
---------	-----------	------	--------------------

**Additional technical data**

Installation advice	Direct mounting	Type of mounting	when screwed in
---------------------	-----------------	------------------	-----------------

**Mounting rail**

Drill-hole diameter	5.2 mm	Short circuit strength corresponds to E-Cu wire	16 mm <sup>2</sup>
Slit gap	11 mm	Slit length	25 mm
Slit width	5.2 mm	Slotted drill holes	Yes
Solder eyelet hole diameter (D)	5.2 mm	Spacing of holes, centre-to-centre	36 mm
Thickness	1 mm		

**Rating data**

Standards	DIN EN 60715
-----------	--------------

**Classifications**

ETIM 6.0	EC001285	ETIM 7.0	EC001285
eClass 9.0	27-40-06-02	eClass 9.1	27-40-06-02
eClass 10.0	27-40-06-02	UNSPSC	30-21-18-01

**Approvals**

ROHS	Conform
------	---------

**Downloads**

Brochure/Catalogue	<a href="#">CAT 4.1 ELECTR 16/17 EN</a> <a href="#">CAT 1 TERM 16/17 EN</a> <a href="#">CAT 2 PORTFOLIOGUIDE EN</a>
Engineering Data	<a href="#">EPLAN, WSCAD, Zuken E3.S</a>
Engineering Data	<a href="#">STEP</a>
User Documentation	<a href="#">StorageConditionsTerminalBlocks</a>

**Accessories**  
**TS 35X7.5/LL 1M/ST/ZN**

**Weidmüller Interface GmbH & Co. KG**  
Klingenbergstraße 26  
D-32758 Detmold  
Germany  
Fon: +49 5231 14-0  
Fax: +49 5231 14-292083  
www.weidmueller.com

**Accessories**

**TS 35 end caps**



**Building installation wiring**

For building installations, we offer a complete system that revolves around the 10×3 copper rail and comprises perfectly coordinated components: from installation terminal blocks, neutral conductor terminal blocks and distribution terminal blocks to comprehensive accessories such as busbars and busbar holders.

**General ordering data**

Type	TS END CAP 35X7.5	Version
Order No.	<a href="#">1283470000</a>	Accessories, Cover cap, End plate, Polypropylene
GTIN (EAN)	4050118078701	
Qty.	100 pc(s).	

**End brackets**



**Klippon® Connect with clamping yoke Technology**

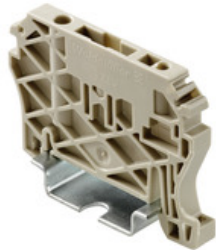
The high reliability and variety of designs of the terminal blocks with clamping yoke connections make planning easier and optimises operational safety. Klippon® Connect provides a proven response to a range of different requirements.

**General ordering data**

Type	WEW 35/2	Version
Order No.	<a href="#">1061200000</a>	W-Series, End bracket
GTIN (EAN)	4008190030230	
Qty.	100 pc(s).	
Type	WEW 35/1	Version
Order No.	<a href="#">1059000000</a>	W-Series, End bracket
GTIN (EAN)	4008190172282	
Qty.	50 pc(s).	

**Accessories**  
**TS 35X7.5/LL 1M/ST/ZN**

**Weidmüller Interface GmbH & Co. KG**  
 Klingenbergstraße 26  
 D-32758 Detmold  
 Germany  
 Fon: +49 5231 14-0  
 Fax: +49 5231 14-292083  
 www.weidmueller.com

**Accessories**
**End brackets**

**Spring connection with tension clamp Technology**

Tension clamp technology is a universal contact system for all common conductor connection types. Its fantastic level of flexibility makes the tension clamp a profitable alternative connection.

**General ordering data**

Type	ZEW 35	Version
Order No.	<a href="#">9540000000</a>	Z-series, End bracket
GTIN (EAN)	4008190956264	
Qty.	20 pc(s).	
Type	ZEW 35/2	Version
Order No.	<a href="#">8630740000</a>	Z-series, End bracket
GTIN (EAN)	4032248348916	
Qty.	20 pc(s).	

**Rail brackets**

**Building installation wiring**

For building installations, we offer a complete system that revolves around the 10×3 copper rail and comprises perfectly coordinated components: from installation terminal blocks, neutral conductor terminal blocks and distribution terminal blocks to comprehensive accessories such as busbars and busbar holders.

**General ordering data**

Type	TSTW 5/M5 ZN	Version
Order No.	<a href="#">1779100000</a>	Accessories, Mounting rail support, Steel
GTIN (EAN)	4032248169894	
Qty.	10 pc(s).	
Type	TSTW D 4.3	Version
Order No.	<a href="#">1610110000</a>	Accessories, Mounting rail support, Steel
GTIN (EAN)	4008190185305	
Qty.	10 pc(s).	
Type	TST 2/M5	Version
Order No.	<a href="#">1286600000</a>	Accessories, Mounting rail support, Steel
GTIN (EAN)	4008190144777	
Qty.	10 pc(s).	
Type	TSTW 5/M5	Version
Order No.	<a href="#">0178100000</a>	Accessories, Mounting rail support, Steel
GTIN (EAN)	4008190059651	
Qty.	10 pc(s).	

## Accessories TS 35X7.5/LL 1M/ST/ZN

**Weidmüller Interface GmbH & Co. KG**  
 Klingenbergstraße 26  
 D-32758 Detmold  
 Germany  
 Fon: +49 5231 14-0  
 Fax: +49 5231 14-292083  
 www.weidmueller.com

## Accessories

Type	TST 2/M6	Version
Order No.	<a href="#">0101700000</a>	Accessories, Mounting rail support, Steel
GTIN (EAN)	4008190069254	
Qty.	10 pc(s).	
Type	TSTW 6/M6	Version
Order No.	<a href="#">0164000000</a>	Accessories, Mounting rail support, Steel
GTIN (EAN)	4008190095345	
Qty.	10 pc(s).	

## End bracket



### Klippon® Connect with clamping yoke Technology

The high reliability and variety of designs of the terminal blocks with clamping yoke connections make planning easier and optimises operational safety. Klippon® Connect provides a proven response to a range of different requirements.

### General ordering data

Type	EW 35/SCHA/M3	Version
Order No.	<a href="#">0258660000</a>	Accessories, End bracket
GTIN (EAN)	4008190033477	
Qty.	20 pc(s).	
Type	EW 35	Version
Order No.	<a href="#">0383560000</a>	Accessories, End bracket
GTIN (EAN)	4008190181314	
Qty.	50 pc(s).	
Type	EW 35 GR 7032	Version
Order No.	<a href="#">0383530000</a>	Accessories, End bracket
GTIN (EAN)	4008190027322	
Qty.	50 pc(s).	

## Railholder



### Shielding and earthing

Our protective earth conductor and shielding terminals featuring different connection technologies allow you to effectively protect both people and equipment from interference, such as electrical or magnetic fields. A comprehensive range of accessories rounds off our range.

### General ordering data

Type	WSH 1	Version
Order No.	<a href="#">1068700000</a>	Accessories, Rail support, PA 66 GF 30
GTIN (EAN)	4008190118389	
Qty.	10 pc(s).	

## Accessories TS 35X7.5/LL 1M/ST/ZN

**Weidmüller Interface GmbH & Co. KG**  
 Klingenbergstraße 26  
 D-32758 Detmold  
 Germany  
 Fon: +49 5231 14-0  
 Fax: +49 5231 14-292083  
 www.weidmueller.com

## Accessories

Type	WSH 6	Version
Order No.	<a href="#">1080200000</a>	Accessories, Rail support, Wemid
GTIN (EAN)	4008190965150	
Qty.	10 pc(s).	
Type	SH 2	Version
Order No.	<a href="#">0494920000</a>	Accessories, Rail support, KrG
GTIN (EAN)	4008190007584	
Qty.	10 pc(s).	
Type	WSH 3/H/N	Version
Order No.	<a href="#">1715970000</a>	Accessories, Rail support, Wemid
GTIN (EAN)	4008190353100	
Qty.	10 pc(s).	
Type	WSH 5	Version
Order No.	<a href="#">1080100000</a>	Accessories, Rail support, Wemid
GTIN (EAN)	4008190965143	
Qty.	10 pc(s).	

## Assembly foot



### Shielding and earthing

Our protective earth conductor and shielding terminals featuring different connection technologies allow you to effectively protect both people and equipment from interference, such as electrical or magnetic fields. A comprehensive range of accessories rounds off our range.

## General ordering data

Type	FM 4/TS35	Version
Order No.	<a href="#">0687900000</a>	Accessories, Mounting foot, Steel, bright finish
GTIN (EAN)	4008190086459	
Qty.	40 pc(s).	
Type	MOFU 35/LO/1	Version
Order No.	<a href="#">0646260000</a>	Accessories, Mounting foot, Polyamide 66
GTIN (EAN)	4008190178574	
Qty.	20 pc(s).	